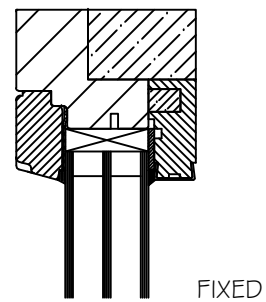


①

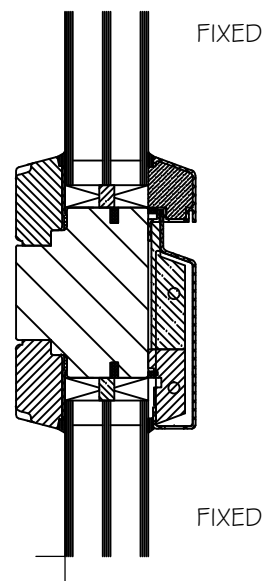
OPERABLE



②

FIXED

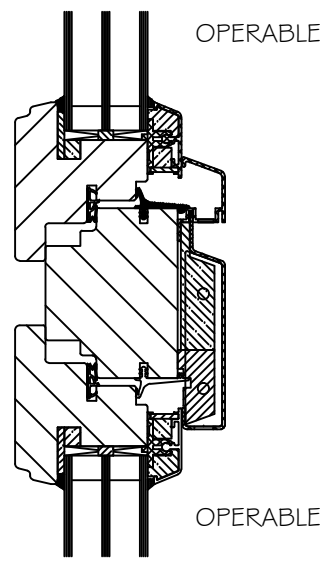
HEADER



FIXED

FIXED

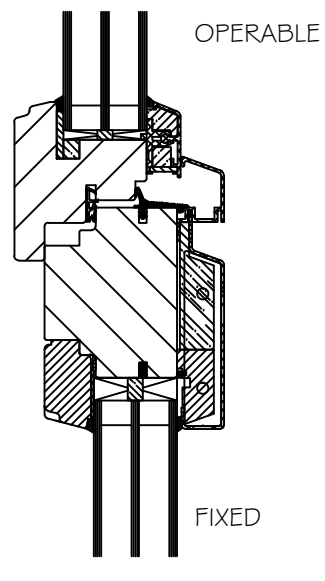
⑤



OPERABLE

OPERABLE

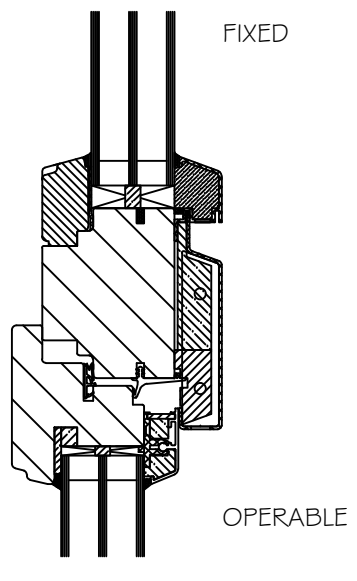
⑥



OPERABLE

FIXED

⑦

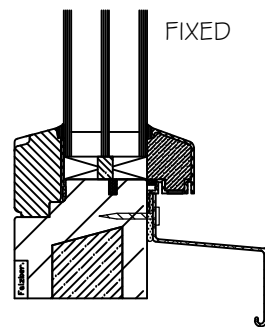


FIXED

OPERABLE

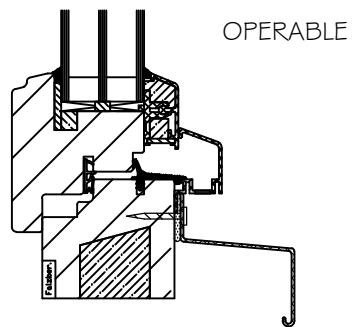
⑧

TRANSOM



FIXED

④



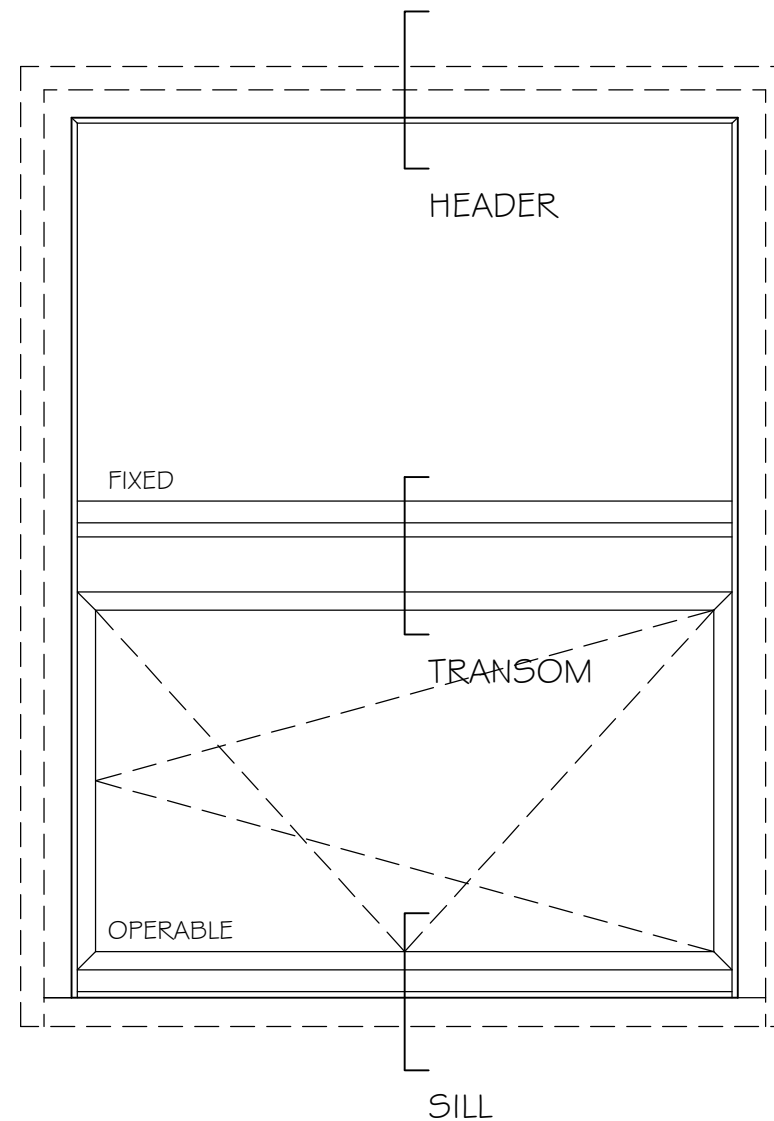
OPERABLE

③

SILL

SECTION DETAILS

3" = 1'-0"



ELEVATION (FROM OUTSIDE)

1" = 1'-0"

OPTIWIN

ALU-2-WOOD

SECTION/
DETAILS

OCT 2009